



KYENGERA TOWN COUNCIL SECOND FIVE-YEAR DEVELOPMENT PLAN--

FY 2015/16-2019/20

VISION

“A Transformed Kyengera Town Council from a Peasant to a Modern one living in harmony with its environment.”

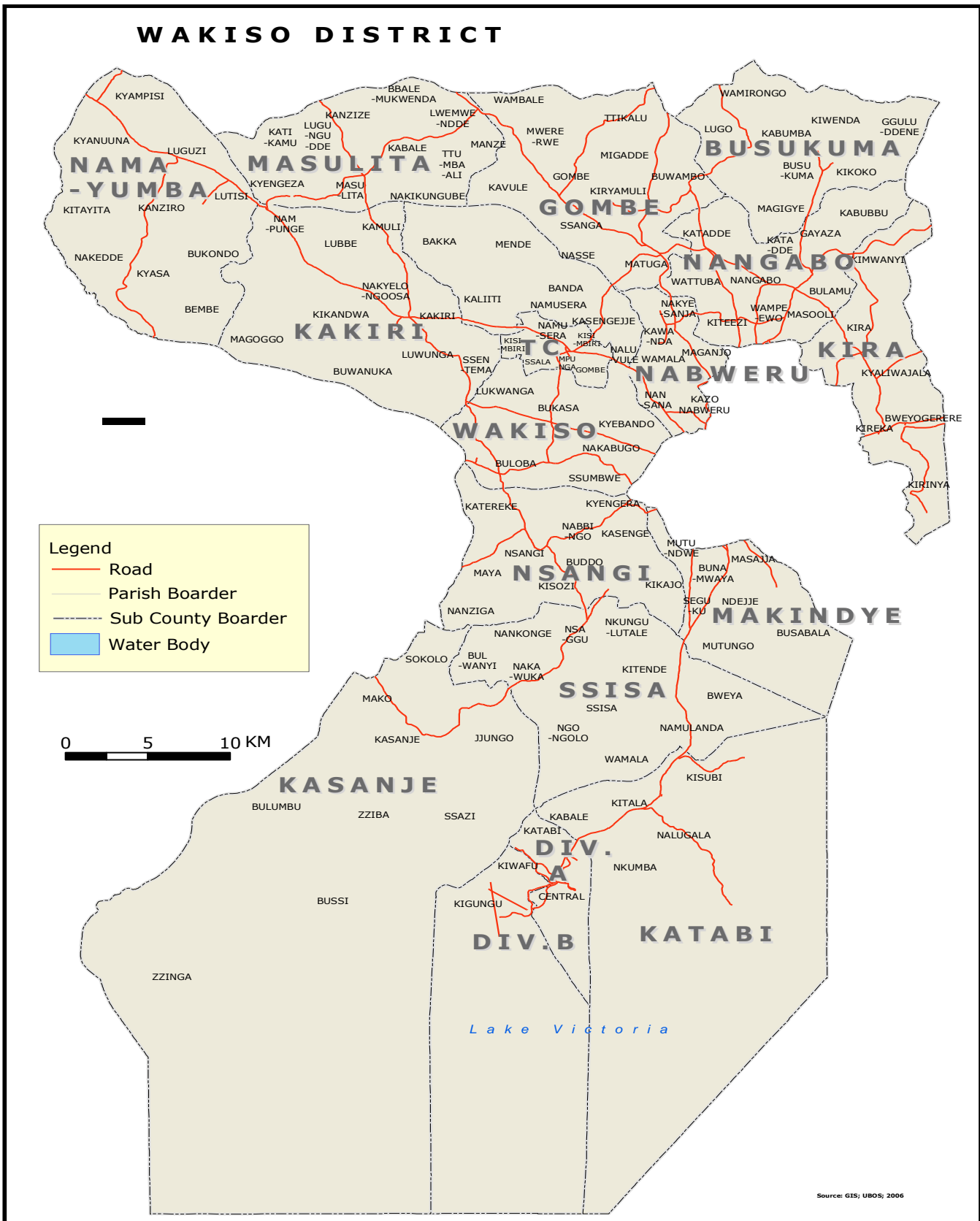
Mission

“To effectively and efficiently serve the community through a coordinated delivery of services focusing on National, Regional and Local priorities and to contribute to the improvement in the people’s quality of life.”

Theme

“Strengthening Kyengera Town Council competitiveness for sustainable Wealth Creation, Employment and Inclusive growth.”

Map of Wakiso



FOREWORD

I am delighted to introduce you the Second Five Year Development Plan 2015/16– 2019/2020; this Development Plan concedes with the Local, District and National priorities which emphasize eradication of poverty and prosperity for all. It involves a series of well planned / logically related activities, which are intended to change the existing situation of Kyengera Town Council by the year 2020.

The five year development plan covers the fiscal period 2015/16 to 2019/20 and will be reviewed every after two and a half years and reflects on the Town council development priorities, implementation strategies, current development challenges and opportunities.

This plan was developed through a consultative process, building on lessons leant in the course of working and interacting with different development partners and other stakeholders, different review meetings were conducted. It has also incorporated the priorities of Wards which included but not limited to poverty reduction, Environment concerns, gender specific needs and Human rights issues.

I take this opportunity to thank the technical team of Kyengera Town Council for the dedication they have exhibited in preparation of the development plan.

Special thanks go to all local councils i.e. LC I to LC III for their continued support and contribution during participatory planning and up to approval of the plan. In a special way, I thank development partners who include NGOs and CBOs that have continued to work with us and have come in to support us where we are constrained and encourage them to continue with the spirit.

“FOR GOD AND MY COUNTRY”

HAJJI ABDUL KIYIMBA

**CHAIRMAN LCIII
KYENGERA TOWN COUNCIL**

ACKNOWLEDGEMENT

I, wish to recognize the effort put in by various stakeholders in the participatory planning process, that was held at various levels of our local government. Their contribution greatly enabled the Town Council Technical Planning Committee to roll the Town Council second five year development plan for 2015/16 – 2019/20 financial years.

This Plan has been prepared through wide consultation with all stakeholders especially the lower local governments. The Development Plan is an instrument, which provides a planning framework for all Council projects for the next five years and identifies the expenditure priorities for the period. It provides avenues for a review of priorities, the planning process and discusses the best practices for maximizing value for money and enhances transparency and accountability.

We are looking forward to see to it that all activities in this plan are funded and implemented with the help of the central government; district and other development partners like NGOs, CBOs, authorities like LVRLAC, ULGA which have funded the previous plans to enable us realize our set goals in the next five year.

I wish to thank the central government in for the introduction of various funding programmes like Youth Livelihood Program (YLP), Community Access Roads Improvement Grant, DDEG among others that have greatly helping in enhancing service delivery.

Still I wish to commend the Council, Executive and the council standing committees for the approval of the plan. It is now our role to implement the plan.

**HAJJI ABDUL KIYIMBA
CHAIRMAN LCIII
KYENGERA TOWN COUNCIL**

LIST OF ACRONYMS

ADB	African Development Bank
ADF	African Development Fund
AIDS	Acquired Immune Deficiency Syndrome
BFP	Budget Framework Paper
CAO	Chief Administrative Officer
CBO	Community Based Organization
CBR	Crude Birth Rate
CCT	Centre Co-coordinating Tutor
CDD	Community Driven Development
CDR	Crude Death Rate
CIS	Community Information System
DFID	Department for International Development
DHSP	District Health Services Program
DLC	District Local Council
DSC	District Service Commission
FAL	Functional Adult Literacy
FMD	Foot and Mouth Disease
FY	Financial Year

HMIS	Health Management Information System
IMR	Infant Mortality Rate
KPI	Key Performance Indicators
LGMSD	Local Government Management Service Delivery
LRR	Locally Raised Revenue
LC	Local Council
LGDP	Local Government Development Program
LOGIC	Local Government Information Communication System
LRDP	Luwero Rwenzori Development Plan
MAAIF	Ministry of Agriculture, Animal Industry and Fisheries
MIS	Management Information System
MMR	Maternal Mortality Rate
MOLG	Ministry of Local Government
MOU	Memorandum of Association
MoWHS	Ministry of Works, Housing and Construction
NRM	National Resistance Movement
NAADS	National Agricultural Advisory Services
NFA	National Forestry Authority
NGO	Non Governmental Organization
NSSF	National Social Security Fund
PAF	Poverty Alleviation Fund
PEAP	Poverty Eradication Action Plan
PAC	Public Accounts Committee
PDU	Procurement and Disposal Unit
PHC	Primary Health Care
PLE	Primary Leaving Examination
POPSEC	Population Secretariat
PPA	Priority Program Area
PWD	People with Disabilities
RGC	Rural Growth Centers

RDC	Resident District Commissioner
SFG	School Facilities Grant
TPC	Technical Planning Committee
UBOS	Uganda Bureau of Statistics
UCDA	Uganda Coffee Development Authority
UNDP	United Nations Development Programme
UNFPA	United Nations Population Fund
UNICEF	United Nations Children Fund
UPE	Universal Primary Education
UPHOLD	Uganda Programme For Human and Holistic Development
USAID	United States Agency for International Development
USE	Universal Secondary Education
VAD	Voluntary Action for Development
VHT	Village Health Teams
WES	Water, Environment and Sanitation
WHO	World Health Organization

EXECUTIVE SUMMARY

The Government of Uganda (GOU), through the National Planning Authority (NPA) is developing the NDP II 2015/2016-2019/20 to guide the implementation of the Uganda Vision 2040 of “A transformed Ugandan Society from a peasant to a modern and prosperous country within 30years.

Accordingly, Kyengera Town Council under the decentralization policy is mandated also to develop comprehensive integrated Development Plans, monitor and evaluate implementation LGA 243 Sec 36 (Amendment 2010). This Town Council Development Plan is the second in a series of six 5-year Plans aimed at achieving the Town Council Vision 2040. It aims to transform the Town Council farmers from a predominantly peasant and low income to a competitive income status.

This Development plan is organized into seven chapters, whereby chapter one presents the background of Wakiso Town council, it describes the Development planning process, structure of the development plan, and lastly, it summaries the local government profile.

Chapter two reviews the sector Development situations, analysis of the state of crosscutting issues, analysis of local government Potentials, Opportunities, constraints, and challenges and lastly, looks at the performance review of the previous financial year 2010/2015. Chapter three highlights the Local Government Strategic Direction in relation to national and district priorities/ direction. Chapter four introduces the Development Plan implementation and coordination strategy. Chapter five gives the details of the Financing frameworks and as well as Resource mobilization strategy. Chapter six introduces monitoring and Evaluation framework plus communication and Feedback arrangement. Lastly, Chapter seven indicates the investment profiles.

Kyengera Town Council Vision

In order to attain our objectives, the implementation of all projects / activities in Kyengera Town Council is guided by its vision “A transformed Kyengera Town Council from peasant to a modern living in harmony with it’s environment.”

Mission Statement

In order to achieve the above vision therefore, the task we have is “To effectively and efficiently serve the community through a coordinated delivery of services focusing on National,Regional and Local priorities and contribute to the improvement in the peoples quality of life.”

Development Context

The Plan is in line with the Uganda Vision 2040 and builds on the achievements registered under the first Development Plan 2010/15 while taking into consideration the challenges encountered and lessons learnt during its implementation

Strategic Direction

The goal of this Plan is to attain a modern and prosperous City through with its people enjoying sustainable levels of economic growth and economic development by 2020. This will be realized through efficient and effective delivery of services in a partiispatory manner that will transform the social economic lives of the peri-urban masses in conformity with national and local priorities . Thus, the Plan sets key objectives to be attained during the 5 year period. These are:

1. To improve access to quality social services like health and education.
2. To increase literacy levels through the functional adult literacy programme.

3. To improve the quality and quantity of the Sub-County infrastructure
4. To collect sufficient revenue to ensure quality service delivery.
5. To ensure food security and income levels by increasing agricultural productivity.
6. To increase the level of water supply for production and resource management.

Major Development Challenges

1. Continued reduction and late release of Central Government funds.
2. Inadequate staff blocks or offices and office facilities.
3. Over politicization of Government programmes especially in their implementation.
4. Shortage of drugs in health centres.
5. Delayed tendering process.
6. Low adoption by communities of improved technologies in the production sector.
7. Poor operation and maintenance of development projects.
8. Political party differences in the Town Councils.
9. Inadequate transport facilities.
10. Low participation of both the communities and Local Council leaders in Government development programmes

Priorities of the Plan

This Plan prioritizes the following projects under **physical planning** ; Preparation of detailed plans/, Beautification of the Town, Road naming, Provision of Street lights, and Purchase of land for landfill .

Under Education and sports; Construction of teachers quarters in UPE Schools, Construction of pit latrines, Provision of school desks, Provision of water tanks, Construction of class room blocks.

Under finance and planning; Valuation and registration of properties / buildings, Registration & Collection of Tax payer's data, Procurement of a double cabin

Construction of a bus terminal, Construction of modern market, Procurement of a motor cycle for health inspection, Inspection markets & trade premises, Garbage collection and disposal, acquisition of land for a Health center establishment,

Construction of water closet toilets in public places, Construction of Abattoir, Construction of a slaughter slab, mobilize and sensitizing the masses about government programs, Support initiated projects CDD, YLP, UWEP, LRDP, operation wealth creation, Strengthening bottom up Participatory planning, Organize performance review meetings

Under works; Procurement of a grader, Upgrading of roads to bitumen standard, Routine rehabilitation of roads, Opening up of new roads , Construction of side drainage & installation of Culverts, putting a second seal on tarmacked roads.

Strategies to finance the plan

The financing of the second development plan, will over five years be financed by locally raised revenue and government transfers apart from the first year, the cost for the subsequent years are projected to the tune of five percent.

Strategies to implement the plan

During the implementation of the Development plan, efforts will be made in ensuring that different stakeholders play their roles effectively. Therefore, Kyengera Town Council Heads of Departments will be the lead agency in the implementation of the Development plan. The implementation of the plan like it has been before shall continue to be based on partnership. More to that the implementation of the plan will depend on the lessons learnt and challenges faced during the previous years.

Strategies to co-ordinate the plan

Coordination of the plan is the responsibility of the technical planning committee, strategies will be put in place to ensure that all planned activities are implemented according to their priorities through the budget desk.

Strategies to monitor and evaluate the implementation of the plan

- Monitoring and evaluation of the plan will be an ongoing process. Quarterly review meetings will be conducted by the Technical Planning Committee, Executive committee, sectoral committees and council to review work plans and reports.
- Budget conference to review performance will be organized annually and midterm review will be held after two and half years of implementation.

BUDGET OUT TURN 2014/2015

The Sub-County then realized 105 % (1,068,448,585/=) of its budgeted revenue. i.e. % (1,015,216,481/=) with local revenue totalling to 128% (903,405,894/=) as compared to (712,645,250/=) that was budgeted. And with as Central Government transfers 165,042,691/=

No.	DETAILS	Budgeted (Shs)	Actual (Shs)	% realized
	Business License	131,000,000	222,210,100	169.6
1.	Market Dues	69,240,000	42,696,700	61.7

2.	Plan Fees	100,000,000	235,284,03	235
3.	Taxi Park /stages	165,600,000	192,440,00	116
4.	Abattoir	12,300,000	15,320,000	124.4
5.	Other fees & charges	350,000	425,000	121.4
6.	Off loading	12,000,000	8,200,000	68
7.	Ground rent	20,000,000	3,185,501	15
8.	Local Service Tax	50,000,000	73,777,059	147
9.	Local Hotel Tax	19,430,000	5,605,500	28.8
10.	Sand pits	6,000,000	4,270,000	71
11.	Bills Boards	25,965,500	9,360,000	36
12.	Operational permits	54,759,750	40,075,000	73
13.	Regetration of bussiness	20,200,000	36,600,000	183
14.	Food handler	6,000,000	13,777,000	229
15.	Forest	10,000,000	180,000	1.8
16.	Boda boda	10,000,000	-	-
	GRAND-TOTAL	712,645,250	903,405,894	126.8

Table I ESTIMATED /ACTUAL REVENUE SUMMARY 2014/2015

Source	Budget	Actual	% realized
Local revenue	712,645,250	903,405,894	126.8
Central Government Transfers	302,571,231	165,042,691	55%
Farmers' contribution to NAADS	-	-	-%
District transfers Sub-county Chairman	-	-	-%
TOTAL	1,015,216,481/=	1,068,448,585/=	105.2%

DEVELOPMENT PARTNERS

There are various NGOs/CBOs and other Private companies that work together with the Town council for development. The NGOs include: TASO Entebbe, IMAU, CARITUS, VAD, CAF,

and Living goods. They are engaged in various activities in the fields of Planning, Development, HIV/AIDS, Agriculture and child related issues. These factors contribute to high morbidity and mortality rates. There are common diseases identified such as Malaria, respiratory tract infections 26%, diarrhea 8.2%, and it is against this background that many NGOs and CBOs have come in to render support to the Town Council.

Table11: Development Partners Analysis:

No	Name	Area of Operation	Nature of Activities	Impact Analysis
1	TASO Entebbe Branch	Nsangi Health Centre III.	- Sensitization on the prevention of HIV/AIDS - Blood Testing -Medication -Counseling -Provision of materials	-People's negative attitude towards blood testing esp. males -reduced stigma among PLWA
2	VAD	All Parishes	-Construction of water sources -Provision of water tanks to schools -Provision of grants to women groups	Community involvement in water development has improved water source sustainability
		Kisozi, Nabbingo, Maya and Nanziga Parishes	- Provision of loans to farmer groups - Provision of goats, cattle, cassava cuttings to farmer groups.	Though repayment is still a problem for some groups many have access to micro credit
3	IMAU	Nsangi Health Centre III. Kasenge	- Sensitization on the prevention of HIV/AIDS - Blood Testing	Homebased cared to HIV/AIDS services has reduced stigma.
4	CARITAS	Sub-county wide	-Provision of clean water. -Post harvesting handling -Promotion of sustainable organic Agric. Techniques -Environmental conservation through Agro-forestry.	CARITAS has contributed a lot to food security in the sub-county in addition to environmental conservation
5	Living goods	-Maya Parish -Nsangi -Nanziga -Kitemu -Katereke	-Provision of medicine at subsidized prices -Medication	Living goods has done much to provide drugs at reduced prices many people have been reached to.

6.	CAF	Sub-county wide	Sensitization on the prevention of HIV/AIDS -Sponsorship to orphans for vocational skills	Awareness creation has been done. Some orphans have been sponsored for vocational skills
7.	Community Resource Focus (CRF)	Katereke	-Follow up of peer groups -Provision of sewing machines	Although there is a low turn up by youth some youth have been able to influence their peers into positive living.

CHAPTER ONE

1.0 INTRODUCTION

This chapter gives the general back ground of the Local Government, introduction of the content of the Development plan, it describes the Development planning process, the structure of the Development plan and lastly it highlights the Town Council profile such as key geographical information, administrative infrastructure etc.

1.1 BACK GROUND

This is Kyengera Town Council Five Year Development Plan Second Edition, that covers the Financial period 2015/16 - 2019/20. It highlights the council's Strategic Direction, Development Priorities and implementation strategies. It also fine points Kyengera Town council current development status, challenges and opportunities.

1.1.1 Context of the LLG Development Plan

The local government development planning is under pinned by a number of legal frame work. These include:-

Article 125 of the Constitution of the Republic of Uganda (1995) and the subsequent Act of Parliament (Act No. 15 of 2002) created the National Planning Authority (NPA) whose primary function is to produce comprehensive and integrated development plans for the country elaborated in terms of the perspective vision and the long-term and medium-term plans.

The NPA Act further provides a mandate to support local capacity development for national planning and, in particular, to provide support and guidance to national and local bodies responsible for the decentralized planning process (NPA Act, section 7(2) (d)). It also mandates the Authority to design and implement programs to develop planning capacity in Local Governments (NPA Act, section 7 (2) (i)); and to monitor the performance of the decentralized system of development planning.

Article 176, (2b) of the Constitution of the Republic of Uganda (1995 as amended) adopts decentralization as the principle applying to all levels of local government and, in particular, from higher to lower local government units to ensure peoples' participation and democratic control in decision making.

Article 190 of the Constitution of the Republic of Uganda (1995) mandates and obliges District Councils to prepare comprehensive and integrated development plans incorporating plans of LLGs for submission to the National Planning Authority

The Local Government Act, Cap 243 (Section 35 (1)) designates Districts Councils as the planning authorities for the districts. The Act mandates the district technical planning committees to coordinate and integrate all the sectoral plans of lower level Local Governments for presentation to the district council (Section 36 (2))

The Local Government Act, Cap 234 (Sections 96 &97) mandates and obliges line ministries to offer policy and technical guidance and advice, support supervision, advise onprojects involving

direct relations with local governments, and establishment of minimum national standards of service delivery in the sectors under their jurisdiction.

Article 155 (1) of the Constitution provides that the President shall cause to be prepared, submitted and laid before Parliament, estimates of revenue and expenditure for each financial year.

Article 193 (3) of the Constitution mandates Local Governments to use conditional grants to finance programs agreed upon between the Government and Local Governments and shall be expended only for the purpose for which it was made and in accordance to the conditions agreed upon.

Chapter 4 of the constitution of Uganda together with regional and international Human rights instruments to which Uganda is a state party.

The physical planning Act, 2010 (section 6(1)) calls for intergration of physical planning with social and economic planning at the national and local levels.

Article 38 of the Constitution of the Republic of Uganda (1995) provides for the right to every Uganda citizen to participate in the affairs of government individually or through his or her representative.

The 1995 National Population Policy (NPP) highlights the need to promote the integration of population factors in development planning at the national (ministries, institutions) and lower level (DPUs and DPTCs) (section 98(i), and 99 (a) of the policy)

The National NGO policy 2010 (Section 5.3) requires the “CAO to provide the NGO community in the district with guidelines to enable the NGOs to participate effectively and in a coordinated manner in the district planning and program implementation”.

Similarly, the National NGO policy 2010 (Section 5.3) requires that “all NGOs and CBOs engaged in development activities within a district shall share their program activity plans and budgets with the Local Government Authority for purposes of harmonization of such program activities into the broader sectoral or area development plans and resource estimates”.

1.1.2 The LLG Development Plan Formulation Process

The LGDP formulation process consists of three main stages, namely: Consultations and data collection; Actual plan formulation; and Plan approval and submission

Consultations and Data Collection

Consultations and data collection were done concurrently at all levels (parishes). It began in November 2014 by information disseminating, Local Government performance review, discussion of the Local Government key development potentials, opportunities, constraints and challenges, identification of key development priorities. Key information on the prevailing physical, social and economic characteristics of a Local Government; Sector development situations focusing on opportunities and potentials for wealth creation and local economic development by each sector; the key stakeholders (private sector, CSO and development partners) situations, opportunities and potentials; Crosscutting issues; and data on the current social service delivery status.

Actual Plan Formulation

Situation analysis and identification of development needs and opportunities began the phase of the LGDP formulation process. The analyses were narration of prevailing situations; their implications for development at the various levels of government; and how they inter-relate with cross cutting issues like environment, gender, HIV/AIDS, human rights, food security and nutrition and population issues, etc. In every case, efforts were made to define issues and problems in terms of magnitude, most affected groups of the population and spatial distributions. The description of the physical and social economic characteristics of the Local Government was done. Aspects like description of the physical characteristics an evaluation of the extent to which some of the physical features of a LG have been affected by human activity was also made, a description of the population profile, a description and analysis of the social economic data of a Local Government, Livelihood analysis. The review of the physical and social economic characteristics of the Local Government was climaxed by drawing the main development implications arising out of the scenarios presented by the data and analyses made in this step of the planning process.

Challenges faced during the planning process:

There were basically three major issues, Low turn up of community members during planning meetings, People's negative attitude towards government programmes and high expectations among others

1.1.3 The Structure of the LLG Development Plan

Kyengera Town Council Five Year Development Plan second Edition is arranged in seven chapters whereby: Chapter one gives the overall introduction to the plan, the structure of

the plan and Chapter two presents the situation analysis per sector and cross cutting issues, it analyses the Local Government Potentials, Opportunities, Constraints and Challenges (POCC), a review of the previous plan performance per sector.

Chapter three indicates Kyengera Town Council Development Plan Strategic Direction in relation to Broad National and Sector Strategic Direction and Chapter four provides Kyengera Town Council Development Plan Implementation, and Coordination strategies, institutional Arrangement and pre re-quisites for successful development plan implementation.

Chapter Five of the plan presents the financial strategic framework and describes in details revenue sources and mobilization strategies, outlines the costs and financing of the plan while chapter six looks at Monitoring and evaluation framework, details of the reporting processes well as communication and feedback arrangements. Lastly, Chapter Seven is presenting the project profiles

1.2 KYENGERA TOWN COUNCIL PROFILE

1.2.1 Key Geographical Information

Location

Kyengera Town Council is situated along Kampala – Masaka road. The headquarters are located at Nsangi – Mukono in Nsangi parish, approximately 15km from Kampala Capital City Authority. Kyengera Town Council borders with the sub-counties of Wakiso in the north, Ssisa in the south, Makindye in the East and Kiringente of Mpigi District in the west. It is one of the component Town Councils of Busiro County. Kyengera Town Council is made up of ten parishes, which are in totality subdivided into fifty four local administrative units. (LC I)

1.2.1 KEY GEOGRAPHICAL SETTING

Kyengera Town Council is made up of ten wards, which are in totality subdivided into fifty four local administrative units. (LC I)

1.2.1.2 Soils

The majority of the soils in Kyengera Town Council are heavily weathered lacustrine soils that due to extensive and continuous cropping have been heavily degraded and highly leached. The absence of reasonable sizes to support natural reclamation through fallowing implies seasonal fertilization to enhance feasible crop yields. Out of the total land area of 11,200 hectares, 3685 hectares is arable land of which 690 hectares is cultivated land, 1,094 hectares covered by forest, while the remaining part is in form of wetlands.

1.2.1.3 Climate

The climate of Kyengera Town Council is pre-dominantly tropical wet and dry and is characterized by seasonal variations of temperature humidity and wind throughout the year. The major dry season runs from December to February while the first rains start in March and end in June. The humidity is usually high in the cropping season ranging between 70 – 85%. This is attributed to the proximity of the sub-county to Lake Victoria. Annual rainfall is about 1700mm occurring in two peaks a year.

1.2.1.4 Water resources

Kyengera Town Council can be generally said to have adequate surface water reserves, although in some parts of the Town Council especially during the dry season, severe water shortage is occasionally experienced. However this may be explained in terms of inadequate resources exploitation rather than resource scarcity.

The majority of the water resources are in form of wetlands and springs. The wetlands in Town Council include, Nammaya, Nabazizza, Mpiringisa and Mayanja, the most extensive of all.

Some of the spring water sources are being conserved and sustainability utilized. About 40% of the spring water resources are protected while the majority is misused, abused and prone to health hazards.

Many areas have a shortage of water and this implies that residents have to move long distances to find household utility resources. Worst hit areas include Busembe, Mukono, Bandwe, Naggalabi and Kabojja. However, although the water yields are satisfactory, they are not especially high and sustainability is not assured. Often the protected springs and shallow wells dry up before their estimated life time and spells out clearly some degree of uncertainty in water supply from the mentioned water sources.

1.2.1.5 Vegetation:

The natural vegetation is predominantly tall grass and the trees scattered on farmlands plus home gardens. The major grasses include; Pennisetum, purpureum, panicum maximum, brachiaria, brizantha, setaria anceps, hyperrhenia rufa and cymbopogon afionardus. The location of Kyengera Town Council in the Lake Victoria crescent encourages growth of a vast variety of trees. Woody varieties include maezopsis eminii (musizi), markhamia lutea (musambya), sapium elliptioum (musasa) chlorophora exelsa, eucalyptus camadulensis (kalitunsi), ficus natalensis (mutuba) and canarium schweifurthii (muwafu).

1.2.1.6 Forest Coverage:

The major forest reserves include Kasenso forest reserve in Maya (1.68km²) , Kajjansi Forest Reserve in Kikajjo (9km²), and Butakya Forest in Katereke (0.25km²). There are also several smaller culturally preserved forests in Nsangi. These include Kisozi, Nsangi – Mukono, Katereke and Bujaasi.

1.2.1.7 Natural resources

1.2.1.8 Infrastructure

We have a health unit constructed at the Town Council head quarters and others in the Town Council for purposes of providing health services to the community. services were brought nearer to the people and therefore the people's health will have to improve.

We also have Nsangi division police at the Town Council Headquarters. This is so instrumental in providing security.

The construction of the classroom blocks especially in UPE schools will increase the number of school going children.

Since the Town Council has got limited resources to cater for all the community roads, the Bulungi Bwansi project has been initiated and am sure the roads will be improved for farmers to access their produce to the markets and for smooth running of trade.

1.2.1.9 Recreational sites

The Town Council is endowed with historical, cultural and camping sites that can attract tourists. These are:

- Naggalabi coronation site (heritage points)
- Kakungube recreational site – Kitemu
- Naggalabi millennium gardens – Buddo
-
- Sirisa eggalabi – Kisozi (rest place for drummers of royal drums)
- Kabaka's swimming pool – Nansove – Buddo
- Sebwami forest – Kisozi/Kitemu (where Kabaka got his authority storm from)
- Kibalangulo cultural forest – Kitemu (where Kabaka used to sharpen his spears)
- Katereke prison ditch – Katereke
- Kabaka – Kiggala Tombs – Manja
- Mukono cultural forest – Mukono / Nsangi

1.2.1.10 Unique geographical features

- Nakatema heritage stones – Nakatema / Nsangi (where Kabaka Kintu be headed Bemba)
- Omweso – Naggalabi Buddo
- Kisozi church stone – Church built in full masonry cut stones.

1.2.1.11 Potential investments

-
- We have Avis Cosmetics Company located in Maya. The company provides employment opportunities to the community. The proposed International abattoir to be constructed in Nalumunye, Kasenge Parish will also provide employment opportunities on completion.

1.2.2 THE POLITICAL AND ADMINISTRATIVE STRUCTURE

- The Local Government Administrative Institutions in the are presented in a three – tie structure including wards, Parishes and the Town Councils. It is divided into 10 parishes and 54 villages.

-

- **1.2.2.1 Political Structure:**

As laid down in the Movement System of Governance, the Local Council III is the highest and supreme body in the Town council. 24 members headed by the Chairperson as a Political head, constitute it.

Three sectoral committees and one executive committee serve the Town Council. The sectoral committees are the overall policy administrative institutions at the sector level. They perform the following major functions at that level.

- Internalize sector policies and guidelines, which are approved by the sub-county council.
- Receive and discuss reports from their respective departments.
- Allocate resources to different priorities in their sectors.
- Approve draft annual budgets for their departments before they are presented to the council.
- Mobilize and sensitize community over sector policies and programmes.

Table 1: Sub-county sector committees with their respective departments

	Sectoral committees	Departments	Sections
1	Finance, Planning, Administration & Investment	Administration,	- Town Clerk's office - Police - Administrative units LC I & II
		Finance	- Revenue - Accounts
		Planning	- Economic and population planning.
2	Production, Works, Water & Roads	Production Department	- Agriculture - Veterinary - Environment - NB: The entomology, fisheries and forestry sections have no extension staff. Efforts are being made to fill up the vacancies.
		Technical Services & Works	- Road works - Civil works
		Water & Environmental Sanitation	- Sanitation and hygiene education - Water supply - Community mobilization

Table 2: CELLS by WARDS:

	WARDS	CELLS	
1	Maya	1. Busembe 2. Bukomye	3. Bujaasi 4. Mpiringisa
2	Nanziga	5. Nanziga 6. Katulaga	7. Bbunga 8. Mawugulu
3	Katereke	9. Manja 10. Nkonya	11. Katereke 12. Muzinda
4	Nsangi	13. Nsangi 14. Buwaali	15. Kyambazi 16. Mukono
5	Kisozi / Kitemu	17. Kitemu 18. Kisozi 'A' 19. Kisozi 'B' 20. Ssumba	21. Namagoma 'B' 22. Nakitokolo 23. Kivu 24. Namagoma 'A'
6	Nabbingo	25. Ttega 26. Kiyanja	27. Kigwanya 28. Nakasozi 29. Bataka
7	Buddo	30. Naggalabi 31. Kimbejja	32. Maggwa 33. Nakiragala
8	Kikajjo	34. Kikajjo 35. Nakirama 36. Kasenge	37. Katale – Busawula 38. Katale – Bukwenda 39. Katale – Bugema – Mayanja
9	Kasenge	40. Kabojja 'A' 41. Kinaawa 42. Mugongo 'A' 43. Bbandwe	44. Nalumunye 45. Mugongo 'B' 46. Kazinga 'A' 47. Kazinga 'B'
10	Kyengera	48. Kabojja 'B' 49. Nkokonjeru 'B' 50. Wakimese 51. Nabazizza	52. Masanda 53. Nkokonjeru 'A' 54. Kyengera Central

Administrative Structure:

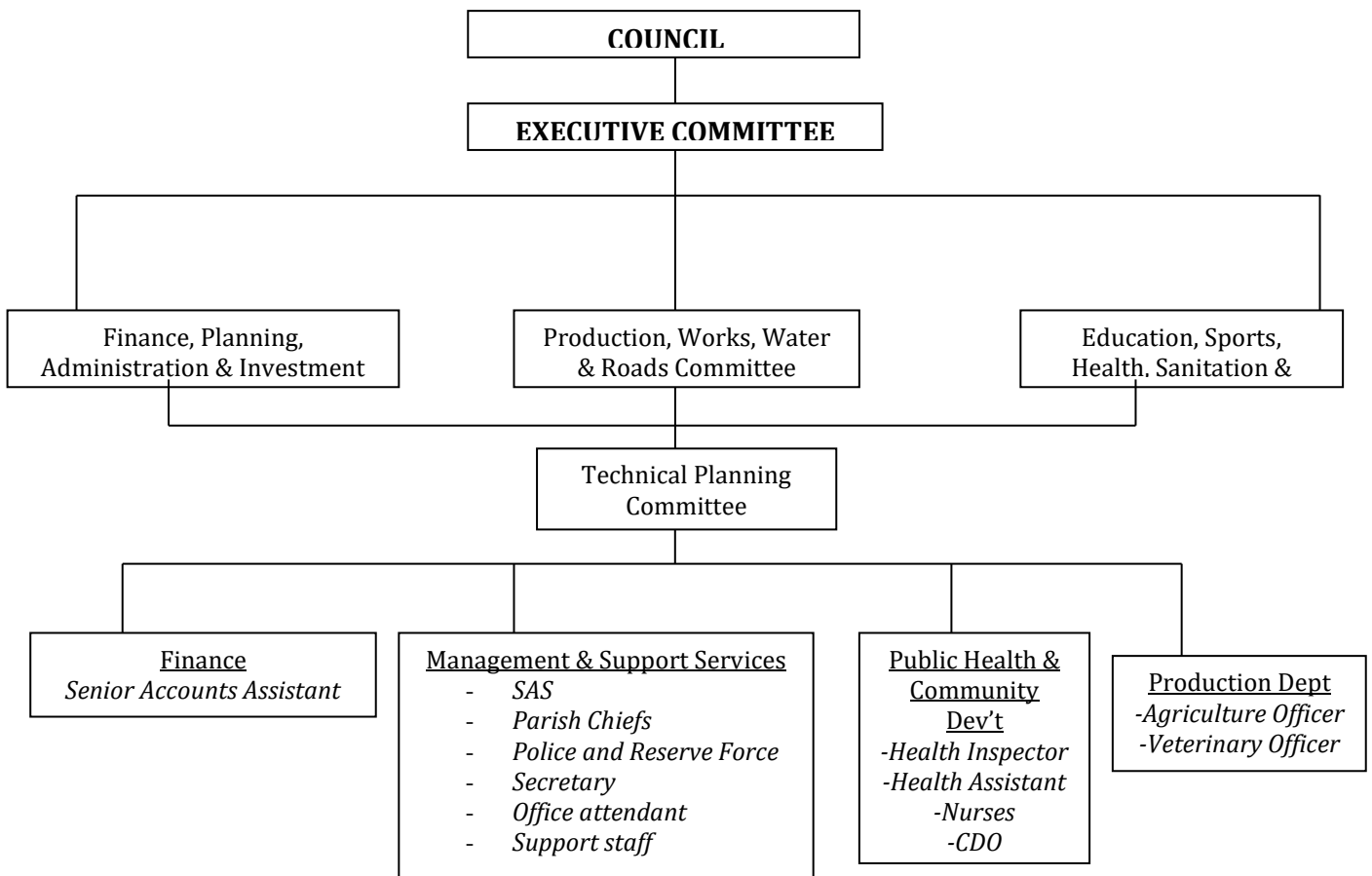
The Town Clerk as the Accounting officer heads the Town council. The Town Council Administration is made up of 11 (eleven) Departments including; Administration, Finance, Planning, Statutory bodies, Education, Health, Technical Services and Works, Community Based Services Production, and Marketing, Natural Resources and Internal Audit.

These are served by a number of specific sections that handle specialized functions within each department. The following table outlines the departments and sections comprising the Town Council administration. They are further categorized between service oriented and administrative departments.

Table 3: Staff Categories by Gender

Category of staff	Number	Male	Female
Town Clerk	1	1	
Assistant Town Clerk	1	1	
Senior Community Development Officer	1	1	
Senior Internal Auditor	1	1	
CDO	1	1	
Human Resource Officer	1		1
Civil Engineer	1	1	
Agricultural Officer	1	1	
Assistant Engineering Officer	1	1	
Town Treasurer	1		1
Economist	1		1
Finance Officer	1	1	
Physical planner	1		1
Assistant Enviromental Officer	1		1
Assistant Records Officer	1		1
Law Enforcement Officer	1	1	
Senior Accounts Assistant	1	1	
Accounts Assistant	1		1
GISO	1	1	
Assistant Vertinary Officer	1	1	
Town Agents	9	7	2
Secretary	2		2
Health In-charges	4	1	3
Health Inspector	1	1	1
Health Assistants	1		2
Police	5	3	2
Security staff (attached to the sub-county hdqtr)	1	1	
Support staff	2	2	
Total	48	28	20s

ADMINISTRATIVE AND POLITICAL STRUCTURE



1.2.3 SOCIAL AND DEMOGRAPHIC CHARACTERISTICS:

1.2.3.1 Population size and density:

The total population of Nsangi sub-county is presently **197,897** people. This is drawn from the coordinates of the recently concluded 2014 housing and Population Census. A bigger percentage of the population is rural, a situation which reflects the basically Agricultural nature of the sub-county economy. In this rural environment, settlement pattern vary, depending on a number of factors such as climate, water supply, soil fertility, etc.

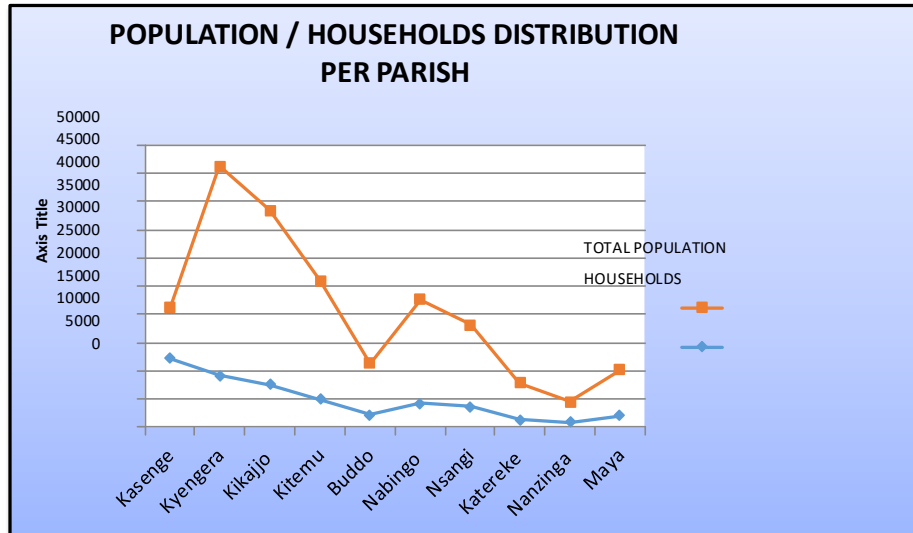
1.2.3.2 Population Distribution & Projections by Parish

Nsangi sub-county can be categorized as an ethnically rich sub-county. It's made up of various ethnic groups of which the Baganda dominates with about 85%. Others include Banyoro, Banyankole, Batoro ,Bagisu , etc. The language commonly spoken is the Luganda.

Table 4: Population Distribution by Gender and Parish

KYENGERA TOWNCOUNCIL					
YEAR	2014				
NO	WARDS	NUMBER OF HOUSEHOLDS	MALE	FEMALE	TOTAL
1	BUDDO	2145	4438	4785	9223
2	KASENGE	12157	23025	25590	48615
3	KATEREKE	1375	3137	3303	6440
4	KIKAJJO	7566	14588	16358	30946
5	KITEMU	4984	9844	11102	20946
6	KYENGERA	9152	17351	19768	37119
7	MAYA	2054	3974	4155	8129
8	NABBINGO	4230	8655	9759	18414
9	NANZIGA	900	1812	1750	3562
10	NSANGI	3619	6794	7709	14503
	TOTAL	48182	93618	104279	197897

SOURCE: UBOS



Source: Population and Housing Census 2014

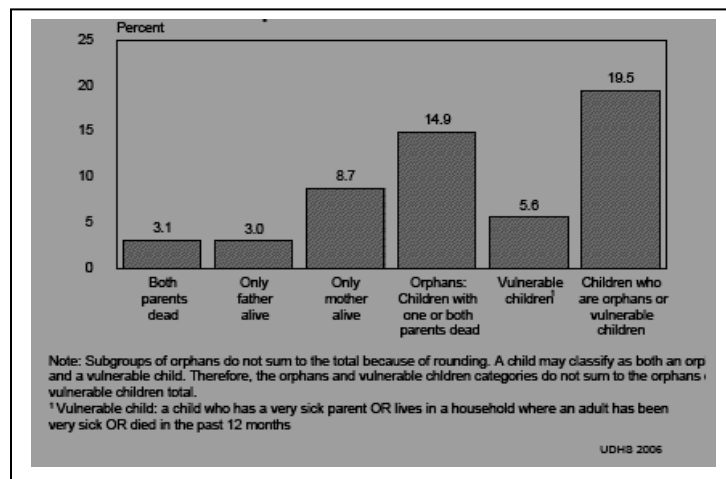
Table 5: Town council Population by Religion:

Catholics	Anglicans	SDA	Pentecostals	Muslims	Other religions	Non religious	Total
19,682	15,547	978	2,492	6,092	742	82	45,615

Source: Population and Housing Census 2014

1.3.4 Orphans and Vulnerable Children (OVC)

One consequence of the HIV epidemic is an increasing number of children under age 17 who are orphans or vulnerable children (OVC). Any child with one or both parents deceased is considered an orphan. A child is defined as vulnerable if he or she has a parent who has been chronically ill, who lives in a household with a chronically ill adult, or who lives in a household where an adult died. By this definition, a child classified as vulnerable may also happen to have one or both parents deceased. However, a child with one or both parents deceased is not considered vulnerable unless they satisfy one of the three conditions described



above. Town council has a total of 4,387 children under the age of 18 as orphans.

Figure 1: OVCs

The table below shows the proportion of children under 18 in Town council who are orphans or vulnerable children. Fifteen percent of children are orphans, 6 percent of children are vulnerable, and one in five children is orphaned or vulnerable.

Table 6: Orphaned Status for Children Less than 18years Old

Children Status	No. of Children
Orphans	4387
Non orphans	19929
Don't Know	44
Father Deceased	3428
Mother Deceased	2103
Both Parents Deceased	1144

Source: Community Based Services Department

A child is considered to be currently attending school if he or she attended school at any time during the school year ongoing at the time of the survey. Results of the 2006 UDHS show that among primary- school-age children, roughly equal proportions of OVC and non-OVC are currently attending school. However, among secondary school-age children, orphans and OVC are less likely than non-OVC children to currently attend school. Town council has the following orphanage centers caring for OVCs; St Mary Kevin Orphanage and Motherhood Center Aggie babies home Children's Home, Mercy Children's Home and Watoto children's home.

Table 7: Categorized Population with Disability

Category of Disability	PWDs
No Disability	44343
Physical	618
Hearing	137
Sight	243
Speech	49
Mental Retardation	57
Mental Illness	60
Other Disabilities	108
Total	197,897

Source: Community Based Services Department

Natural Resources Endowments

There are interventions for environment as a sector; however, in addition to that the development plan will facilitate efforts to mitigate adverse environmental effects resulting from unsustainable management of natural resources, Specific activities like promoting agro forestry, setting up of tree nurseries, sensitization on use of energy saving stoves will be promoted at institution and household level. All planned projects for construction will undergo environmental impact assessment and environmental screening where appropriate and mitigation measures addressed within the project cost. Local capacity will be built for sustainable environment management.

SOCIAL ECONOMIC INFRASTRUCTURE

2.1 Wealth Creation

1. While economic growth has improved over the years and absolute poverty reduced to 19.7 percent, this growth has not generated the momentum needed to transform Uganda's economy at the pace anticipated in Uganda Vision 2040. The average growth rate (5.5 percent) of NDPI was far below the anticipated rate of 7.2 percent. The low growth rates have affected the rate of wealth creation. This is further explained by the low investments in key growth opportunities that can lead to the rapid accumulation of wealth at all levels.

CHAPTER TWO

SITUATION ANALYSIS

2.0 Introduction

This Chapter presents the magnitude of state of affairs of different sectors and it is going to be the basis for planning for next five years depending on the current situation and bearing in mind the lessons learnt, development challenges and the vision we want to achieve by 2020. It also analyses LLG Potentials, Opportunities, Constraints, and Challenges plus the review of the previous performance 2010/11 -2014/15

Review of the Sector Development Situations

The administrative structure of Kyengera Town Council is made up of; the political and the management arms. The implementation organ is headed by the Town Clerk who is the overall Administrative Officer and operates through the Technical Staff in the 10 (ten) different departments / sectors. The political arm comprised of the Chairperson (Mayor) who is the head of Executive with the policy body of the Council.

Kyengera Town Council is made up of Namely, Buddo, Kasenge, Katereke, Kikajjo, Kitemu, Kikajjo, Kyengera, Maya, Nabbingo, Nanziga and Nsangi with a total of 53 villages

2.1.1 Management and Support Services Analysis

Management and support services include Administration, Records Department, Law Enforcement and general Staff Welfare.

Overall objective of Administration Department

The overall objective of Administration/ management and support services department is Provision, facilitation and coordination of all other departments within the Town Council.

Challenges

Inadequate funding from the Center, negative attitude towards payment of taxes, negative attitude by some members of community towards government programmes.

Proposed interventions

The interventions proposed under this plan include; guiding council on policy matters and implementation of council decisions, General management of the Town Council activities such as monitoring all departments to ensure adherence to personnel regulations, Preparation of Development plans and work plans for the Town Council in consultation with the District Administration and the communities, mobilization, collection and management of revenues for the Town Council and ensuring value for money and maintaining law and order.

2.1.2 FINANCE

a. Introduction:

This department is concerned with the collection of revenue and the allocation of collected resources; Like elsewhere in other Town Councils in the District, Kyengera Town council revenue base is very much limited. There are two major sources that contribute to the Town Council annual budget and these include local revenues and Central Governments' contributions. For the past four years, Central Government contributions have emerged the biggest source available to the Town council.

Challenges

Despite the fact that all taxes are introduced legally by government, most people have negative attitude towards paying taxes hence high rate of tax defaulters and this leads to non realization of the budget and planned projects , secondly, inadequate funding from the centre and under staffing of the department leading to inefficiency in service delivery, lack of tax payers data for proper planning.

- Revenue monitoring meetings with Technical Planning Committee held
- Registration and assessment of businesses done.
- Maintenance and posted books of accounts.
- Co-funding obligation expected to be finalized by the end of financial year 2009/10.
- Coordination of LGDP and NAADS projects for the sub county has been performed.
- Local service tax and Hotel tax sensitization to stakeholders done.
- The Technical Planning Committee has been sitting on a monthly basis.

c. Lessons learnt:

Locally raised revenue is very low hence the need to implement the recommendations of the MOREG strategies.

d. Finance SWOT Analysis:

i.

Potentials

- Competent Staff.
- Budget monitoring meetings.

Data relating to Business in Sub-County already secured

Challenges

- Inadequate staff.
- Lack of up to date data.

iii. Opportunities:

- Proximity to the city.
- Availability of land that can be used for industrialization & hence development.

iv. Constraints

- Political pronouncements.

Proposed interventions

The interventions proposed under this department include the following; sensitization of the masses about taxes, identify and register all businesses and buildings, computerize revue data, contract service providers to collect revenue, and lastly, supervise and monitor revenue performance.

.1.3 POLICE POSTS

a. Introduction:

Maintenance of Law and Order in the Town council is a major component for development and effective delivery of services and it is a responsibility of the Local Administration Police under a woman Corporal and the Local Defense Unit security that falls under it.

The Town council is boosted by 7 central Police Posts of Kyengera, Buddo, Nabbingo, Nsangi high way, Nsangi Sub-county headquarters, Nalumunye and Katale Busawula,

which are all found within the Town Council. Local Council Officials, GISO, Chiefs and Security minded individuals all contribute in the maintenance of Law and Order.

b. Achievements:

- Office equipment and stationary provided
- Staff welfare paid
- Monthly motivation allowances for officers and men provided
- Security operation allowances paid
- Maintenance of law and order
 - Criminal investigations done
 - Foot patrols

- Security meetings conducted

c. Constraints

- Inadequate manpower
- Inadequate funds
- Lack of official transport
- Lack of communication equipments
- Lack of sensitization to public-community policing.
- The Police cell is too weak to accommodate hard-core criminals.
- Lack of a juvenile cell.

d. Town Council Police Post POCC Analysis

i. Potential

- Existence of the Court of Law at the Town Council Headquarter that makes it easy to prosecute criminals.
- Collaboration with other security organs is possible and easy.
- Collaboration with local leaders (LCI'S) and chiefs makes it possible for law enforcement by Holding local council courts giving information to police and arresting culprits.
- The existence of the Director of Public Prosecutions (DPP) office at the Sub-County i.e. State Prosecutor enables quick investigations and prosecution exercise.
- Introduction of computer services at the Sub-County has eased communication.

ii. Challenges

- Lack of transport and communication facilities
- Inadequate manpower
- The police cell is very weak.

- Lack of a Juvenile cell

iii. Opportunities

- Proximity to Kampala city and to other law enforcement agencies.
- Availability of computer services at Town Council Headquarters
- Availability of private and public phones.
- Availability of medical, education, water, and electricity facilities.

iv. Constraints

- Lack of proper locking system for doors and windows to all the Town council Headquarters buildings.
- Lack of security lights to the Health Centre III.

2.1.4 PRODUCTION SECTOR

The production sector consists of the following departments namely.

- Agriculture
- Veterinary
- Forestry and environment
- Fisheries
- Entomology

2.1.4.1 VETERINARY

a. Introduction

The veterinary department of Kyengera is focused on improving the standards of livestock